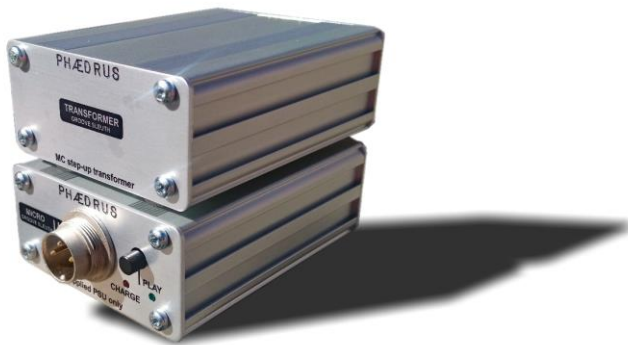


GROOVE SLEUTH TRANSFORMER

Cartridge Compatibility Tables



Version 1.0 (January 2021)



TRANSFORMER hardware and moving-coil cartridge combinations

The cartridge listed are recommended with the following transformers - based on output levels and load impedance requirements. Cartridges appear more than once where they work equally well with different hardware.

TRANSFORMER 1

Audio Technica AT-ART9, AT-33Sa, AT-OC9XSL, AT-OC9XSH, AT-OC9XML, AT-OC9XEN, AT-OC9XEB, AT-33PTG/II, AT-33EV, AT-ART1000

Benz Micro ACE S Low (Red Body), MC Gold

Clearaudio Talisman V2 Gold, Essence

Denon DL103, DL103 R EM

Dynavector DV XX2 MKII, DV-20 X2 (low-output), DR XV1-S, DRT XV-1T, Karat 17DX, Te Kaitora Rua

Gold Note Tuscany Gold

Goldring Ethos, Elite

Koetsu Urushi Gold, Urushi Sky Gold, Urushi Tsugaru, Urushi Black, Red T, Black K, Azure Platinum, Blood Stone Platinum, Blue Onyx Platinum, Burma Jade Platinum, Rhodonite Platinum, Jade Platinum, Signature Rosewood

Lyra Kleos, Atlas Lambda SL, Etna Lambda SL, Kleos SL

Ortofon Cadenza: Blue, Red, Bronze, Black: Quintet Blue, Red, Bronze, Black: MC Anna (Diamond), SPU, MC Windfeld Ti

Rega Aphelion 2, Ania Pro, Ania

Roksan Shiraz

Shelter Harmony, Accord, Model 901 III, Model 5000, Model 501 II, Model 301 II

Shun Mook Reference

Sumiko Palo Santos Clebration, Pearwood Clebration, Starling, Blue Point Special EVO III

TRANSFORMER 2

Audio Technica AT-ART9, AT-33Sa, AT-OC9XSL, AT-OC9XSH, AT-OC9XML

Benz Micro ACE S Medium (clear body), Gulwing SHR, ACE S Low (red Body), MC Gold

Clearaudio Goldfinger Statement, Titanium V2, Da Vinci V2, Stradivari, Concerto V2, Talisman V2 Gold, Essence

Gold Note Donaltello Gold, Machiavelli Gold Mk 2

Goldring Ethos, Elite

Koetsu Red K, Urushi Gold, Urushi Sky Gold, Urushi Tsugaru, Urushi Black, Red T, Black K

Lyra Delos, Atlas Lambda, Etna Lambda, Kleos

Ortofon Cadenza Red, Cadenza Blue, Cadenza Bronze, Quintet Blue, Quintet Red

Shelter Model 9000, Model 7000, Harmony, Accord, Model 901 III, Model 5000, Model 501 II, Model 301 II

Shun Mook Reference

Sumiko Blackbird Low, Palo Santos Clebration, Pearwood Clebration, Starling, Blue Point Special EVO III

Van den Hul White Beauty Special X, The Crimson, The Frog (standard & Gold), MC-One Special, MC-10 Special, Grasshopper III (GLA), Grasshopper III (SLA), The Canary, Black Beauty GPX, Condor Gold high out, Condor (standard and high out)

TRANSFORMER 3

Denon DL110

Benz Micro ACE S Medium (clear body), ACE S High (blue body), Ebony S (high)

EMT HSD006, JSD 5, JSD 6, JSD P 6.0 Platinum, JSD Pure Black, JSD Pure Lime, JSD S 75, EMT JSD VM

Grado Statement 3, Opus 3 (Low), Sonata 3 (Low), Platinum 3 (Low), Reference 3, Master 3 (Low)†

† The low output Grados (not MCs at all in fact), are specified for a higher input impedance, but they have been tested and work well with TRANSFORMER 3: primary inductance is sufficient to give a bass response which is -3dB at 5Hz.

Direct - no transformer

Benz Micro ACE S High (blue body), Ebony S (high), MC Silver

Dynavector DV-10X5 MK11 (high-output), DV-20 X2 (high-output)

Gold Note Donatello Red

Goldring Eroica H (high out)

Ortofon MC-1 Turbo & MC-3 Turbo

Sumiko Blackbird High, Songbird High, Amethyst, Blue Point Special EVO III, Blue Point No. 2 High Out

Van den Hul White Beauty Special XO, Grasshopper III (high out), The Frog (High output), MC-Two Special, Black Beauty GPX (High)